

# Rabbit Polyclonal Antibody to GTPBP10

## Order Information

Catalog#	P01430		
Size/Concentration	100µl	50µl	20µl
Price(¥)	1980	1180	650

## Description

Small G proteins, such as GTPBP10, act as molecular switches that play crucial roles in the regulation of fundamental cellular processes such as protein synthesis, nuclear transport, membrane trafficking, and signal transduction

## Specification

Aliases	: ObgH2; UG0751c10
Swissprot	: A4D1E9
WB Predicted band size	: 43 kDa
Host/Isotype	: Rabbit IgG
Antibody Type	: Primary antibody
Storage	: Store at 4°C short term. Aliquot and store at -20°C long term. Avoid freeze/thaw cycles.
Species Reactivity	: Human
Immunogen	: Fusion protein of human GTPBP10
Formulation	: Purified antibody in PBS with 0.05% sodium azide and 50% glycerol.

## Application

WB	1/200-1/1000
ELISA	1/1000-1/2000

Call 1-510-860-4615  
+86-19375157864  
Email [Info@ProMab.com](mailto:Info@ProMab.com)  
Web [www.ProMab.com](http://www.ProMab.com)  
[www.ProMab.cn](http://www.ProMab.cn)

## Protocol

WB - [www.promab.com/protocol/wb.html](http://www.promab.com/protocol/wb.html)  
IHC - [www.promab.com/protocol/ihc.html](http://www.promab.com/protocol/ihc.html)  
IF - [www.promab.com/protocol/if.html](http://www.promab.com/protocol/if.html)  
FCM - [www.promab.com/protocol/fcm.html](http://www.promab.com/protocol/fcm.html)  
**Antigen Sequence** is available upon request.

## Products and Services

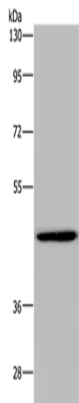
- Mouse Monoclonal Antibody
- Rat Monoclonal Antibody
- Human Antibody
- Hybridoma Sequencing
- Polyclonal Antibody

**For Research Only**

**Application Key:** WB - Western Blot | IHC - Immunohistochemistry | ICC - Immunocytochemistry | FCM - Flow Cytometry | ELISA - Enzyme-linked Immunosorbent Assay | IP - Immunoprecipitation

# #P01430

# Rabbit Polyclonal Antibody to GTPBP10



Gel: 8%SDS-PAGE, Lysate: 40  $\mu$ g, Lane:  
A549 cells, Primary antibody:  
P01430(GTPBP10 Antibody) at dilution  
1/200, Secondary antibody: Goat anti rabbit  
IgG at 1/8000 dilution, Exposure time: 10  
minutes

**For Research Only**

**Application Key:**WB - Western Blot | IHC - Immunohistochemistry | ICC - Immunocytochemistry | FCM -  
Flow Cytometry | ELISA - Enzyme-linked Immunosorbent Assay | IP - Immunoprecipitation

**#P01430**